



OUTDOOR ARMOR™ CONDENSING WATER HEATER

Job Name: _____ Model No. _____
 Location: _____ Type Gas _____
 Engineer: _____ Recovery Rate in GPH _____ @ _____ °F Rise
 Agent/Wholesaler: _____ Equipment Tag(s): _____
 Contractor: _____

NOTES:

Outdoor Standard Features

- > **AHRI Certified 96% Thermal Efficiency**
- > **Modulating Burner with 5:1 Turndown**
 - Direct-Spark Ignition
 - Low NOx Operation
 - Sealed Combustion
 - Low Gas Pressure Operation
- > **Stainless Steel Heat Exchanger**
 - All Welded Construction, Gasketless Design
 - 160 psi Working Pressure
- > **Outdoor Rated Vent System**
 - UV Resistant Polypropylene
 - Natural to L.P. Conversion Kit
 - Stainless Steel Circulating Pump & Pump Cover
 - On/Off Switch

- Flow Switch
- Adjustable Leveling Legs
- Tank Sensor
- Adjustable High Limit w/ Manual Reset
- Automatic Reset High Limit
- Condensate Trap
- Zero Clearances to Combustible Material
- 5 Year Limited Warranty
(See Warranty for Details)
- 1 Year Parts Warranty (See Warranty for Details)

Smart System Features

- > **SMART SYSTEM Digital Operating Control**
- > Multi Color Graphic LCD Display
- > **Built-in Cascading Sequencer for up to 8 Water Heaters**
 - Lead Lag
 - Efficiency Optimization
- > **Building Management System Integration**
 - Modbus Communication (Optional)
 - 0-10 VDC Input to Control Modulation or Set point
 - 0-10 VDC Modulation Rate Output
 - 0-10 VDC Input to Enable/Disable call for heat
- Access to BMS Settings Through Graphic LCD Display
- Low Water Flow Safety Control & Indication
- Inlet & Outlet Temperature Sensors & Readout
- Flue Temperature Sensor
- Water Heater Pump Control
- Pump Delay with Freeze Protection
- Pump Exercise
- Night Setback
- Building Recirculation loop Pump Control*

- Night Setback of Building Recirculation Loop*
- Time Clock
- > **Maintenance Reminder**
 - Ability to program contact name & number into display
- > **High Voltage Terminal Strip**
 - > 120 VAC / 60 Hertz / 1 Phase Power Supply
 - > Pump Control Contacts
 - > Water Heater Pump Control Contacts
 - > Building Recirculation Pump Control Contacts
- > **Low Voltage Terminal Strip**
 - 24 VAC Auxiliary Device Relay
 - Auxiliary Proving Switch Contacts
 - Flow Switch Contacts
 - Alarm on Any Failure Contacts
 - Runtime Contacts
 - Tank Sensor Contacts
 - Cascade Contacts
 - 0-10 VDC BMS External Control Contact
 - 0-10 VDC Boiler Rate Output Contacts

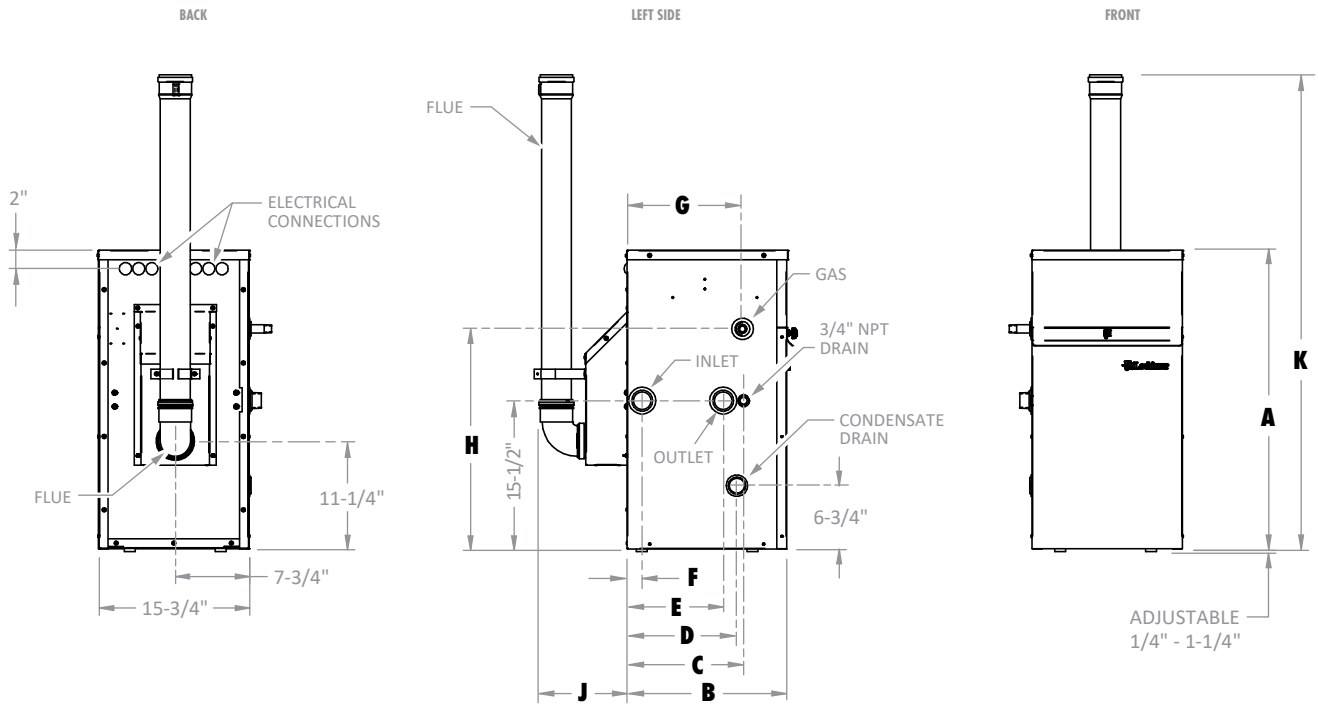


Optional Equipment

- Alarm on Any Failure
- Condensate Neutralization Kit
- Modbus Communications
- BMS Gateway to LON or BacNet
- Freeze Protection Kit (Condensate Trap)

*Exclusive to Lochinvar

Outdoor Armor™ Condensing Water Heater DIMENSIONS & SPECIFICATIONS



Model Number	Btu/Hr. Input	GPH @ 100° Rise	A	B	C	D	E	F	G	H	J	K	Gas Conn.	Water Conn.	Vent Size	Ship Wt. (lbs.)
OAN201PM	201,000	232	31-1/4"	20-1/4"	16-1/2"	15-3/4"	14-1/2"	5-1/4"	16-1/2"	23"	9-1/4"	49-3/4"	1/2"	1-1/4"	3"	181
OAN286PM	285,000	332	42-1/2"	17-3/4"	13-1/4"	13-1/2"	6-1/4"	2-1/2"	14"	35-3/4"	9-1/4"	52"	3/4"	2"	4"	236

Notes: Outdoor installation only. All information subject to change. Change "N" to "L" for LP gas models.

AHRI Certified Models



Lochinvar, LLC
 300 Maddox Simpson Parkway
 Lebanon, Tennessee 37090
 P: 615.889.8900 / F: 615.547.1000
 f t in y Lochinvar.com

