

## INDIRECT PLATE AND FRAME COMMERCIAL WATER HEATER

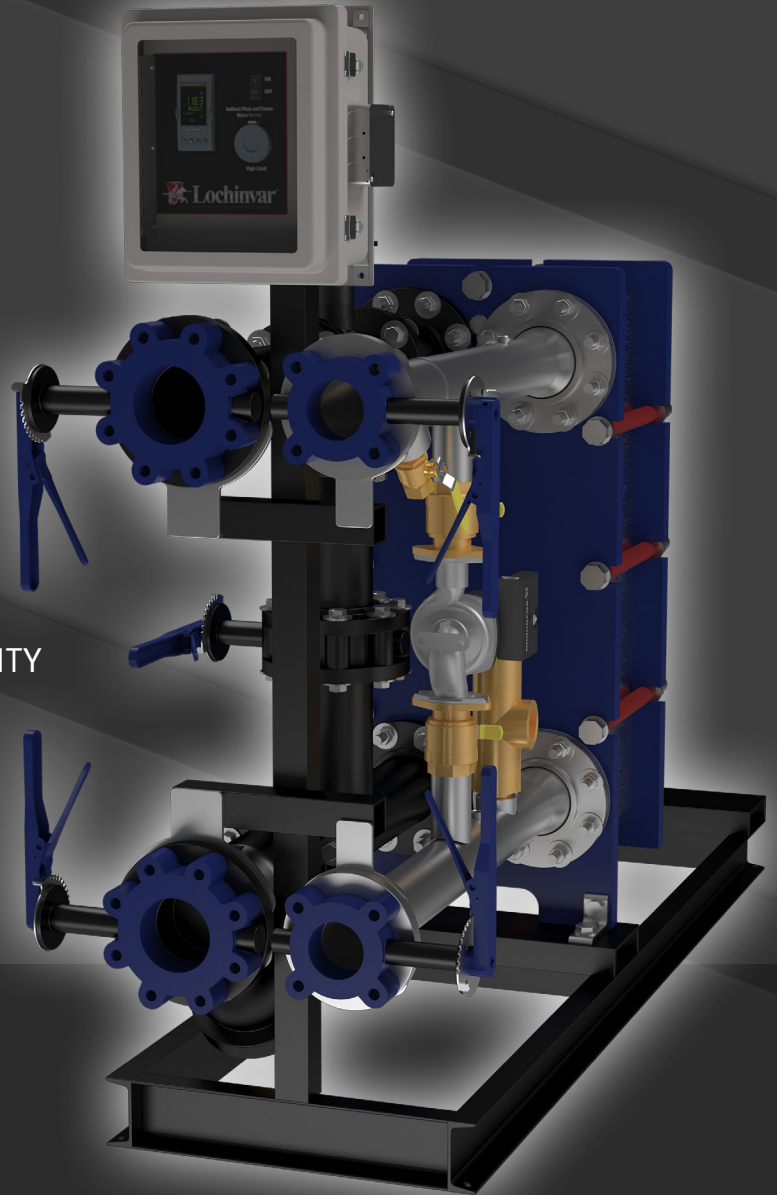
7 MODELS - UP TO 160 GPM OF HOT WATER

ADVANCED TEMPERATURE CONTROL

MODULATING TEMPERATURE CONTROL  
VALVE

SCALE REDUCTION PUMP

STAINLESS STEEL DOUBLE WALL PLATE  
AND FRAME HEAT EXCHANGER FOR LONGEVITY



# HOT WATER ON DEMAND

DESIGNED ★ ENGINEERED ★ ASSEMBLED

# USA

 **Lochinvar®**

## UP TO 160 GPM OF DOMESTIC HOT WATER IN MINIMAL FLOOR SPACE

Lochinvar's Indirect Plate and Frame water heaters are specifically designed and manufactured for hot water systems with continuous loading. The system is designed to heat domestic water, on-demand without the need for large volumes of stored water. The result is less square footage required for mechanical equipment. Lochinvar's Indirect Plate and Frame is a factory packaged, skid-mounted instantaneous water heater that uses boiler water as the energy source. The heat exchanger is a double-wall plate and frame constructed of stainless steel. Temperature control is provided by a modulating temperature control valve (Figure 1).



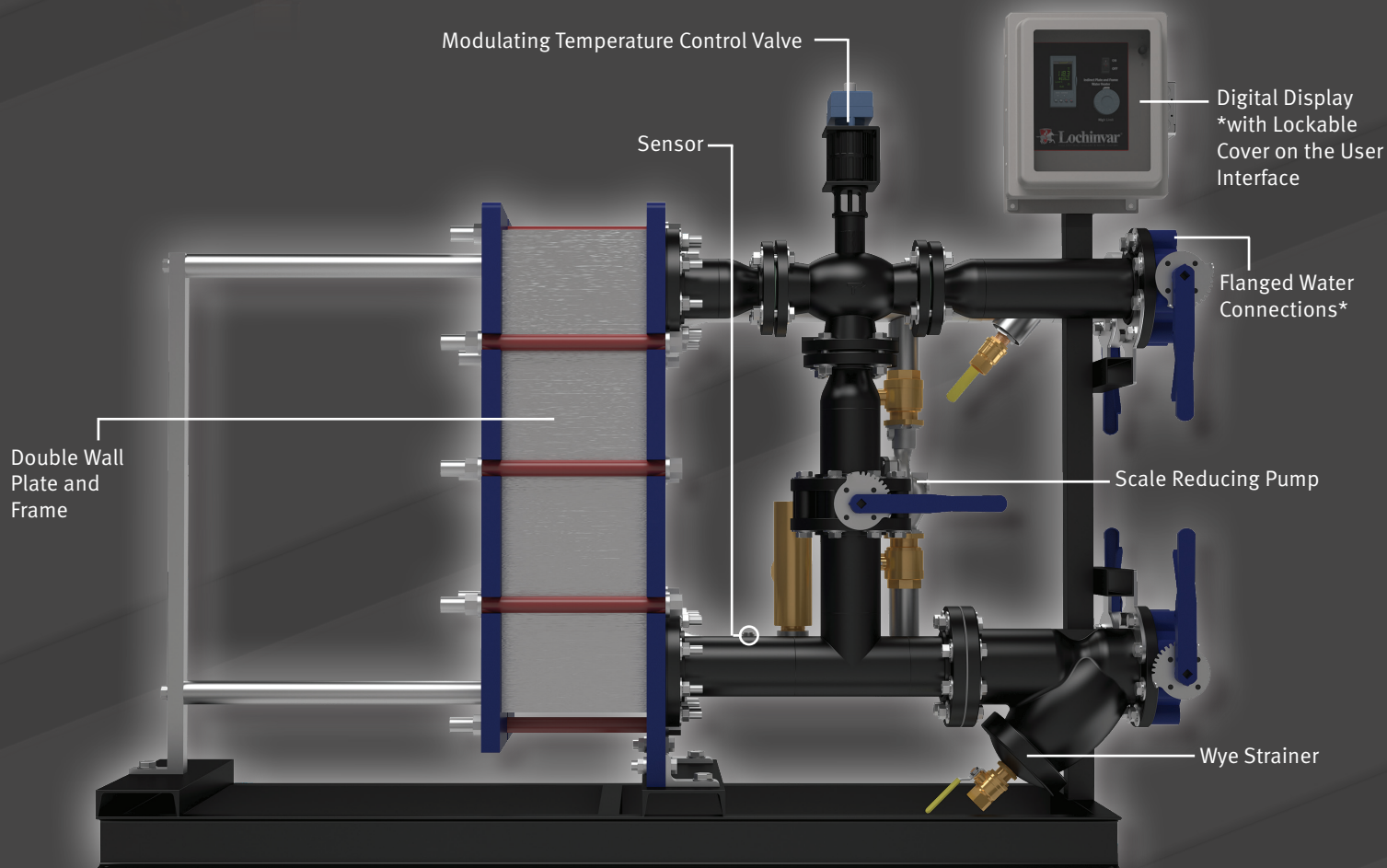
Figure 1 Modulating Temperature Control Valve

### HOW IT WORKS

The simple-to-use electronic control provides a digital display (Figure 2) that is clear and easy to read and is BMS ready with Modbus built-in and provided as standard equipment. The electronic control infinitely modulates the valve in response to the hot water demand to deliver high turndown capacity. The high turndown capacity allows the domestic water to be delivered to the building at an accurate and reliable temperature regardless of the change in demand, whether it be 100% or a fraction of the load!



Figure 2 Digital Display



### New Features\*

- Up to a 35% Smaller Footprint on Select Models
- Increased Performance at Lower Boiler Water Temperatures
- Stainless Steel Piping on Domestic Hot Water Side

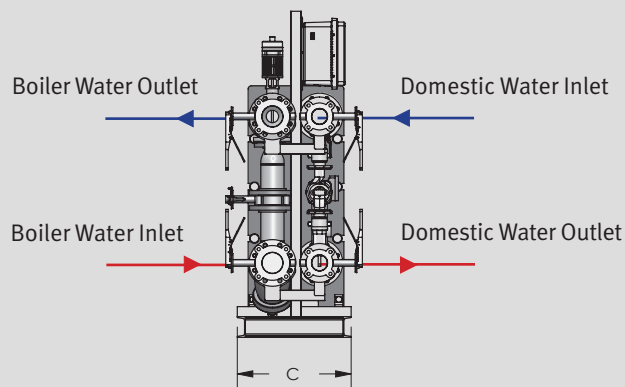
# DOMESTIC WATER INLET-OUTLET (°F)

## 40-140

BOILER WATER INLET TEMP (°F)	IPW MODEL	DOMESTIC		BOILER		
		FLOW (GPM)	PRESSURE LOSS (PSI)	MAX. FLOW (GPM)	OUTLET TEMP (°F)	MAX. PRESSURE LOSS (PSI)
145	IPW015DW	7	1	60	133	15
	IPW030DW	13	1	75	127	10
	IPW050DW	18.5	1	75	119	6
	IPW070DW	28	1	130	122	10
	IPW090DW	36	1	160	121	9
	IPW105DW	44	1	225	124	12
	IPW120DW	53	1	225	120	10
150	IPW015DW	9.5	1	60	133	15
	IPW030DW	17	1	75	126	10
	IPW050DW	24	1	75	117	6
	IPW070DW	36.5	1	130	121	10
	IPW090DW	47	1	160	119	9
	IPW105DW	58	1	225	123	12
	IPW120DW	69	1	225	118	10
160	IPW015DW	13.5	1	60	136	15
	IPW030DW	23.5	1	75	127	10
	IPW050DW	32.5	1	75	115	6
	IPW070DW	50	1	130	120	10
	IPW090DW	64	1	160	118	9
	IPW105DW	80	1	225	123	12
	IPW120DW	93	1	225	117	10
170	IPW015DW	17	2	60	140	15
	IPW030DW	29.5	1	75	129	10
	IPW050DW	40	1	75	115	6
	IPW070DW	61.5	2	130	121	10
	IPW090DW	78.5	2	160	119	9
	IPW105DW	98	2	225	125	12
	IPW120DW	114	2	225	117	10
180	IPW015DW	21	2	60	143	15
	IPW030DW	35	2	75	131	10
	IPW050DW	47	1	75	115	6
	IPW070DW	72.5	2	130	122	10
	IPW090DW	92	2	160	120	9
	IPW105DW	116	3	225	126	12
	IPW120DW	134	2	225	118	10
190	IPW015DW	25	3	60	148	15
	IPW030DW	40.5	2	75	134	10
	IPW050DW	53.5	2	75	116	6
	IPW070DW	80	3	130	126	10
	IPW090DW	105	3	160	121	9
	IPW105DW	133	4	225	128	12
	IPW120DW	153	3	225	119	10
200	IPW015DW	27	4	60	153	15
	IPW030DW	45.5	3	75	136	10
	IPW050DW	60	2	75	116	6
	IPW070DW	80	3	130	136	10
	IPW090DW	118	4	160	123	9
	IPW105DW	150	5	225	130	12
	IPW120DW	160	3	225	126	10
210	IPW015DW	30.5	4	60	157	15
	IPW030DW	51	4	75	139	10
	IPW050DW	66.5	2	75	117	6
	IPW070DW	80	3	130	146	10
	IPW090DW	130.5	5	160	124	9
	IPW105DW	160	5	225	135	12
	IPW120DW	160	3	225	136	10
220	IPW015DW	34	5	60	160	15
	IPW030DW	56	4	75	141	10
	IPW050DW	72.5	3	75	118	6
	IPW070DW	80	3	130	156	10
	IPW090DW	143	6	160	126	9
	IPW105DW	160	5	225	145	12
	IPW120DW	160	3	225	146	10

\*\* Consult manual or factory for sizing or performance not on the chart.

## INDIRECT PLATE AND FRAME DIMENSIONS AND SPECIFICATIONS



## DIMENSIONS AND SPECIFICATIONS

Model Number						Water Connections		Shipping Weight(lbs)
	A	B	C	D	E	Boiler Side	Domestic Side	
IPW015DW	56"	37-3/4"	15"	30-3/4"	5-1/2"	2"	2"	750
IPW030DW	56"	43-1/2"	15"	30-3/4"	5-1/2"	2"	2"	900
IPW050DW	56"	43-1/2"	15"	30-3/4"	5-1/2"	2"	2"	1075
IPW070DW	63"	50-1/4"	22"	36-3/4"	8-1/2"	3"	2"	1225
IPW090DW	63"	56-1/2"	22"	36-3/4"	8-1/2"	3"	3"	2020
IPW105DW	63"	54-1/2"	22"	36-3/4"	8-1/2"	4"	3"	2175
IPW120DW	63"	52-1/2"	22"	36-3/4"	8-1/2"	4"	3"	2258

## STANDARD FEATURES

## ASME Double Wall Heat Exchanger

- 316L Stainless Steel
- 150 psi Working Pressure

### Digital Display

- DHW Set Point Range 90°F to 180°F

### Advance Temperature Control

### Modulating Control Valve

### Scale Reduction Pump

### Automatic Air Vent

### ASME Temperature and Pressure Relief Valve

- 210°F and 150 psi

Adjustable High Limit

### Wye Strainers - Domestic Piping and Boiler Piping

### Isolation Valves - Domes

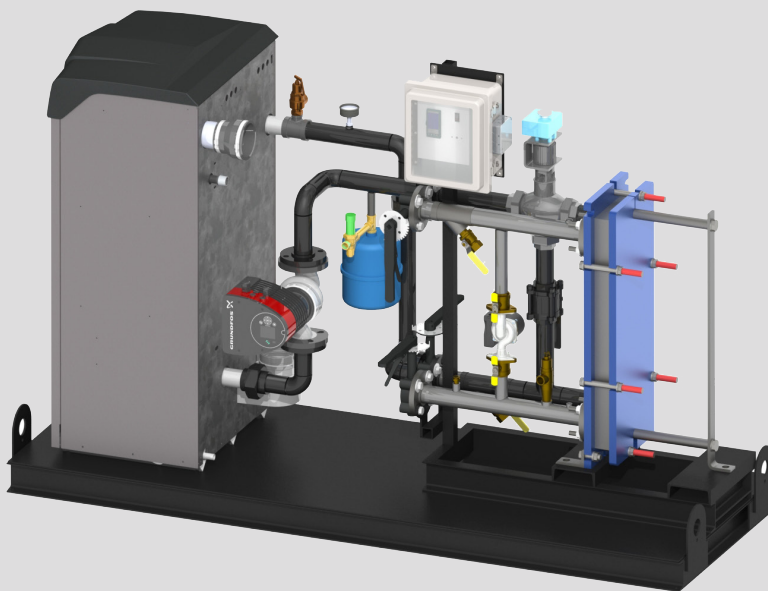
## Modbus Communication

5 Year Limited Warranty (See Warranty for Details)

1 Year Parts Warranty (See Warranty for Details)

## PACKAGE SOLUTIONS

The Indirect Plate and Frame Water Heater can easily be incorporated with a skid-mounted package solution. Please contact your local Sales Representative or Lochinvar Customer Assurance about a Package Solution.



Lochinvar, LLC  
300 Maddox Simpson Parkway  
Lebanon, Tennessee 37090  
P: 615.889.8900 / F: 615.547.1000



**ALDI  
ATKINS  
MEMBER**