

COMMERCIAL WATER HEATERS

COPPER-FIN® ATMOSPHERIC GAS FIRED WATER HEATERS

The Copper-fin Atmospheric water heater features a simple design to deliver trouble free installation, long lasting durability and prevention from lime scale buildup.

STANDARD FEATURES

COPPER FINNED TUBE HEAT EXCHANGER - The heart of the Copper-Fin water heater is its copper finned tube heat exchanger. The gasketless copper tube heat exchanger design reduces the risk of leaks or system failures that are common with conventional water heaters.



BUILT-IN DRAFT HOOD - With our built-in draft hood, the Copper-Fin water heater installs easily in applications where overhead space is limited and headroom restrictions exist.

LOCH-HEAT™ CERAMIC TILE - Our incredibly durable, Loch-Heat ceramic tile will not crack or split and provides the benefit of an overall water heater weight reduction of 25% over other refractory material.

A BETTER IDEA - The Better Idea system combines the Copper-Fin water heater with a separate round jacketed storage tank to provide a high performance water heating system.

SERVICEABILITY - The water heater's design allows for easy access to all major components for servicing. The heat exchanger is designed to slide out the front of the water heater for faster maintenance.

ASME TEMPERATURE & PRESSURE RELIEF VALVE - Factory installed.

3-YEAR LIMITED HEAT EXCHANGER WARRANTY, 1-YEAR PARTS WARRANTY - See warranty for details.

DESIGNED ★ ENGINEERED ★ ASSEMBLED

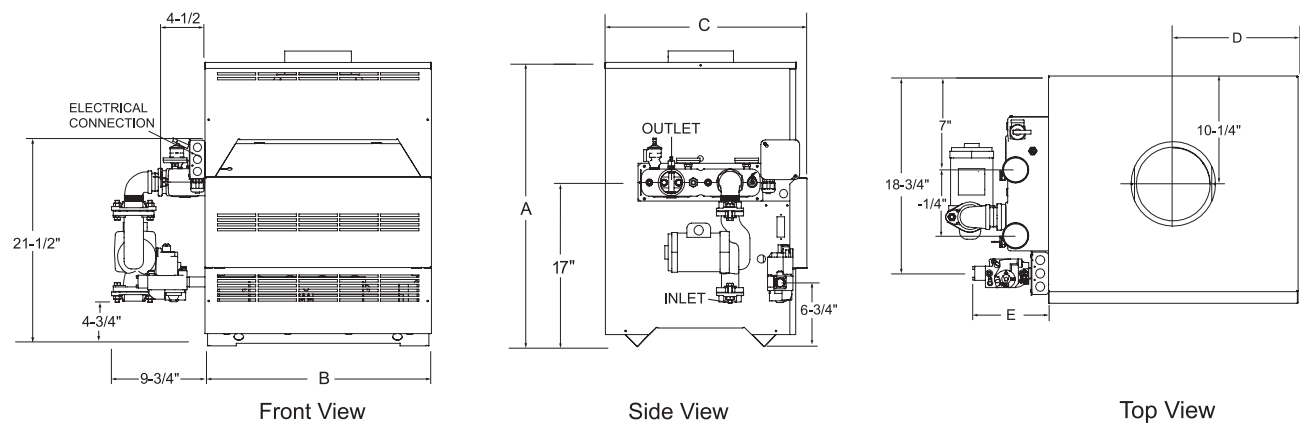
USA



Lochinvar®

HIGH EFFICIENCY BOILERS & WATER HEATERS

COPPER-FIN® WATER HEATER DIMENSIONS & SPECIFICATIONS



| COPPER-FIN WATER HEATER | | | DIMENSIONS & SPECIFICATIONS | | | | | | | |
|-------------------------|-----------|------------------|-----------------------------|---------|---------|---------|--------|-----------|-----------|--------------|
| Model Number | Input MBH | GPH @ 100°F Rise | A | B | C | D | E | Vent Size | Gas Conn. | Ship. Weight |
| CWN090PM* | 90,000 | 87 | 29-1/2" | 15-1/2" | 21-1/2" | 7-3/4" | 6-1/4" | 5" | 1/2" | 175 |
| CWN135PM* | 135,000 | 131 | 29-1/2" | 19-1/2" | 21-1/2" | 9-3/4" | 6-1/4" | 6" | 1/2" | 195 |
| CWN180PM* | 180,000 | 175 | 29-1/2" | 23-1/2" | 21-1/2" | 11-3/4" | 7-1/4" | 7" | 3/4" | 220 |
| CWN199PM* | 199,000 | 193 | 29-1/2" | 26-1/2" | 21-1/2" | 13-1/4" | 7-1/4" | 7" | 3/4" | 230 |
| CWN201PM | 201,000 | 193 | 29-1/2" | 26-1/2" | 21-1/2" | 13-1/4" | 7-1/4" | 7" | 3/4" | 230 |
| CWN225PM | 225,000 | 218 | 29-1/2" | 26-1/2" | 21-1/2" | 13-1/4" | 7-1/4" | 7" | 3/4" | 235 |
| CWN270PM | 270,000 | 262 | 29-1/2" | 29-1/2" | 21-1/2" | 14-3/4" | 7-1/4" | 8" | 3/4" | 240 |
| CWN315PM | 315,000 | 305 | 29-1/2" | 32-1/2" | 21-1/2" | 16-1/4" | 6-1/4" | 8" | 3/4" | 250 |
| CWN360PM | 360,000 | 349 | 29-1/2" | 35-1/2" | 21-1/2" | 17-3/4" | 8-1/4" | 9" | 1" | 270 |
| CWN399PM | 399,000 | 387 | 29-1/2" | 44-1/2" | 22" | 22-1/4" | 5-1/2" | 10" | 1" | 340 |
| CWN500PM | 500,000 | 485 | 34-1/2" | 52-1/2" | 22" | 26-1/4" | 9-1/2" | 10" | 1" | 365 |

Notes: Change 'N' to 'L' to denote L.P. gas models
No deration for L.P. models.
Water Connections are 2" NPT on 6-1/4" centers.
Performance data is based on manufacturer test results.
*Canada Only

STANDARD FEATURES

- Built-In Draft Diverter
- Stainless Steel Burners
- ASME Copper Finned Tube Heat Exchanger
- 160 psi Working Pressure
- Gasketless Heat Exchanger Design
- All Bronze Circulating Pump
- Pump Delay/Freeze Protection
- Remote Tank Thermostat
- Glass-Lined Water Surfaces
- Loch-Heat Ceramic Tile Combustion Chamber
- ASME Temperature & Pressure Relief Valve
- Terminal Strip
- Automatic Reset High Limit
- Manual Reset High Limit
- Self Diagnostic Indicator Lights
- 24 Volt Control System
- CSA Design Certified for Alcove Installation

CSA Design Certified for Installation on Combustible Floors
3 Year Limited Warranty on Heat Exchanger

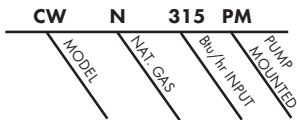
OPTIONAL EQUIPMENT

- Adjustable High Limit w/ Manual Reset
- Contacts on any Failure (CW 315-500)
- Contacts for Air Louvers (CW 315-500)
- Cupro-Nickel Heat Exchanger
- Flow Switch
- Low Water Cut-Off
- Stack Frame
- PVC Venting Kit (CW 90-135)

FIRING CONTROLS

- F1 - Standing Pilot (Standard CW 90-270)
- F9 - Intermittent Spark Ignition (Standard CW 315-500)
- F7 - California Code (CW 225-500)

FOR EASE IN ORDERING BY MODEL NUMBER



This model is a 315,000 Btu/hr, natural gas Copper-Fin water heater.

For technical information call 800-722-2101. Lochinvar, LLC reserves the right to make product changes or improvements without prior notice.



Lochinvar, LLC
300 Maddox Simpson Parkway
Lebanon, Tennessee 37090
P: 615.889.8900 / F: 615.547.1000
Lochinvar.com

