



Lochinvar®

HIGH EFFICIENCY BOILERS & WATER HEATERS

POWER-FIN WATER HEATER

Submittal Sheet

PFX-Sub-06

POWER-FIN® GAS WATER HEATERS, MODELS 502, 752, 1002, 1302, 1501, 1701, & 2001

Job Name: _____

Location: _____

Engineer: _____

Agent/Wholesaler: _____

Contractor: _____

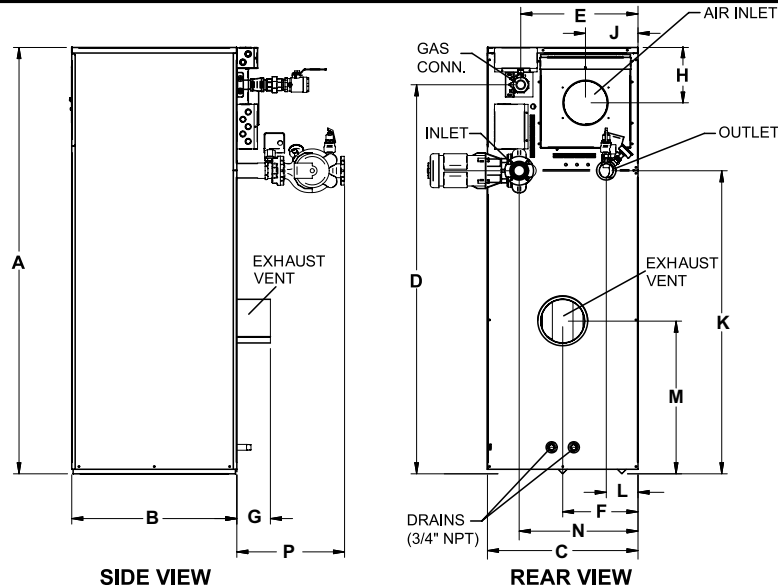
Model No. _____

Type Gas: _____ BTU/Hr
Input _____

Recovery Rate in GPH _____ @ _____ °F Rise

Equipment Tag(s): _____

NOTES:



Power-Fin Water Heater

Dimensions and Specifications

Model No.	Input MBH	GPH @ 100°F Rise	A	B	C	D	(F)	(M)	F	G	H	J
PFN0502PM	500	515	44-1/2"	28-1/2"	23-1/4"	34"	18-3/4"	18-1/2"	6-1/2"	9-1/4"	8"	7-3/4"
PFN0752PM	750	773	52"	28-1/2"	23-1/4"	41-3/4"	19"	18-3/4"	6-3/4"	9-1/4"	8"	7-3/4"
PFN1002PM	999	1,030	59-1/4"	28-1/2"	23-1/4"	48-3/4"	17"	18-3/4"	7-1/4"	10-1/4"	8"	7-3/4"
PFN1302PM	1,300	1,339	67-3/4"	28-1/2"	23-1/4"	57-1/4"	17"	18-3/4"	8-1/4"	10-1/4"	8"	7-3/4"
PFN1501PM	1,500	1,545	65-1/2"	29-3/4"	27-1/4"	59"	21"	20-3/4"	13-1/2"	9-1/4"	10"	9-1/2"
PFN1701PM	1,700	1,752	70"	29-3/4"	27-1/4"	63-1/2"	21"	20-3/4"	13-1/2"	9-1/4"	10"	9-1/2"
PFN2001PM	1,999	2,061	76-3/4"	29-3/4"	27-1/4"	70"	21"	20-3/4"	13-1/2"	9-1/4"	10"	9-1/2"

Model No.	K	L	M	N	(F) P	(M) P	Gas Conn.	Air Inlet	(F) Cat I	Vent Sizes (M)* Cat II	(M) Cat IV	Ship Wt. (lbs)
PFN0502PM	23"	11-1/2"	11-1/4"	17-1/2"	15-1/4"	15-1/4"	1"	5"	7"	7"	4"	535
PFN0752PM	30-1/2"	11-1/2"	11-1/4"	17-1/2"	15-1/4"	15-1/4"	1-1/4"	5"	9"	9"	5"	584
PFN1002PM	37-3/4"	11-1/2"	11-1/4"	17-1/2"	15-1/4"	15-1/4"	1-1/4"	6"	10"	10"	6"	663
PFN1302PM	46-1/4"	11-1/2"	19-1/2"	17-1/2"	15-1/4"	15-1/4"	1-1/4"	6"	12"	12"	8"	682
PFN1501PM	43-1/2"	5-3/4"	22-1/4"	21-1/2"	24-1/2"	19-1/2"	1-1/2"	6"	12"	8"	6"	1,131
PFN1701PM	48"	5-3/4"	25"	21-1/2"	24-1/2"	19-1/2"	1-1/2"	7"	14"	9"	7"	1,166
PFN2001PM	54-3/4"	5-3/4"	27-1/2"	21-1/2"	24-1/2"	19-1/2"	1-1/2"	8"	14"	10"	8"	1,193

Notes: Change 'N' to 'L' for LP Gas Model. No deration on LP models.

All water connections are 2-1/2"

POWER-fin®

Codes & Registrations

ANSI Z21.10.3/CSA Certified
ASME Certified, "HLW" Stamp / National Board
SCAQMD Certified
Canadian Registration Number (CRN)



Standard Features

- › **85% Thermal Efficiency**
- › **Outdoor Ready**
- › **Modulating Burner with 5:1 Turndown**
 - Hot Surface Ignition
 - Low NOx Operation
 - Sealed Combustion
 - Low Gas Pressure Operation
- › **Vertical & Horizontal Venting**
 - Category I or Category IV Venting
 - Cat IV converts to Cat II w/optional vent kit
 - Cat IV Venting up to 50 Feet
- › **ASME Copper-Finned Tube Heat Exchanger**
 - ASME Certified, "HLW" Stamped
 - Gasketless design
 - 160 psi working pressure
- › **On/Off Switch**
- › **Adjustable High Limit w/ Manual Reset**
- › **Flow Switch**
- › **Low Air Pressure Switch**
- › **Downstream Test Cocks**
- › **150 psi Temperature and Pressure Relief Valve**
- › **Combustion Air Filtration**
- › **All Bronze Pump**
- › **Zero Clearances to Combustible Material**
- › **1 Year Warranty on Parts**
- › **5 Year Limited Warranty**
(See Warranties for Details)

Smart Touch™ Features

- › **SMART TOUCH Operating Control**
 - Full-Color 8" Touchscreen LCD Display
 - CON-X-US Remote Connect
 - Building Management System Integration with 0-10 VDC Input
 - Dual Level Password Security
 - Inlet & Outlet Temperature Readout
 - Freeze Protection
 - Service Reminder
 - Time Clock
- › **Built-in Cascading Sequencer for up to 8 Water Heaters**
 - Built-in Redundancy
 - Cascade Multiple Sized Boilers
 - Lead/Lag Cascade
 - Efficiency Optimized Cascade
- › **Low Water Flow Safety Control & Indication**
- › **Data Logging**
 - Hours Running, Modulation Rate
 - Ignition Attempts
 - Last 10 Lockouts
- › **Programmable System Efficiency Optimizers**
 - Night Setback
- › **High-Voltage Terminal Strip**
 - 120V/60 Hertz/1 Phase Power Supply
- › **Low-Voltage Terminal Strip**
 - 24 VAC Auxiliary Device Relay
 - Auxiliary Proving Switch Contacts
 - Alarm on Any Failure Contacts
 - Runtime Contacts
 - Thermostat Contacts
 - Unit Enable Contacts
 - Louver Proving Contacts
 - Tank Sensor Contacts
 - Cascade Contacts
 - 0-10 VDC BMS External Control Contact

Firing Codes

M	Indicates 5:1 Turndown, Category IV
F	Indicates 100% On/Off Fire, Category I
M9	Standard
F9	Special Order Factory Trimmed

Optional Equipment

Cupro-Nickel Heat Exchanger
High and Low Gas Pressure Switches w/
Manual Reset
Outdoor Kit
Low Water Cutoff w/ Manual Reset & Test
(required for California Code)
Alarm Bell
Modbus Communications
BACnet MSTP Communications
BMS Gateway to LON or BacNet IP

› Vent Kits

Horizontal Exhaust Cap
Horizontal Air Intake Cap
Horizontal Direct Vent Cap
Category IV to Category II Conversion Kit

› Venting Options

Sidewall
Vertical
DirectAir Vertical w/Sidewall Inlet
DirectAir Horizontal w/Rooftop Inlet
Direct Vent Horizontal
Direct Vent Vertical
Outdoor



Lochinvar, LLC
300 Maddox Simpson Parkway
Lebanon, Tennessee 37090
P: 615.889.8900 | F: 615.547.1000
f t in Lochinvar.com

